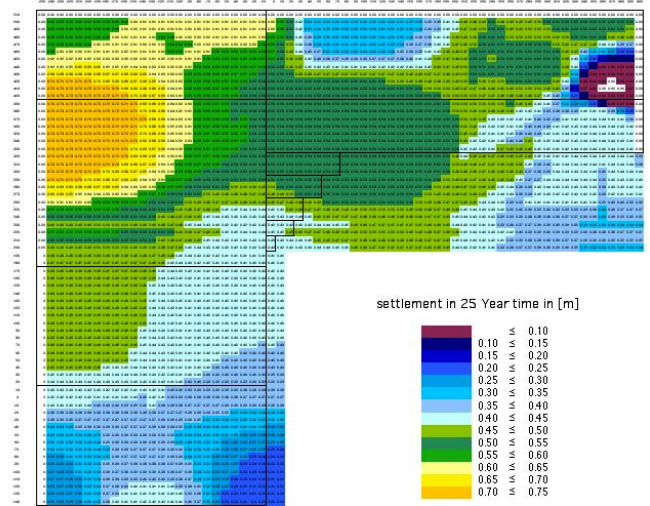
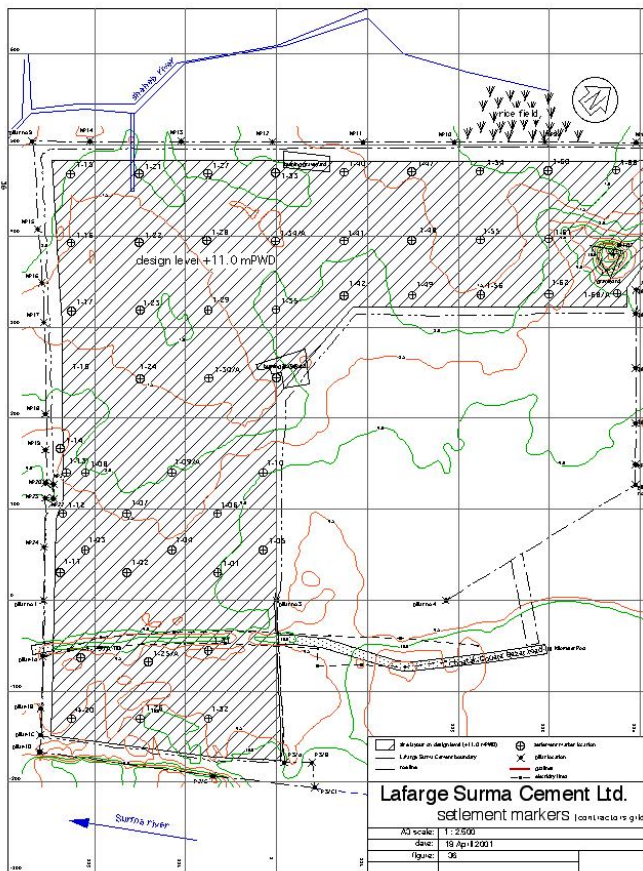


Contract supervision for the platform construction of a cement plant site



Lafarge Surma Cement Ltd intend to develop a cement factory in Chhatak near Sylhet, along the Surma River in the North East of Bangladesh. The plant site needed to be reclaimed to a design level above +11 mPWD. The sand ($\pm 900,000 \text{ m}^3$) was dredged by a local contractor with small suction dredges and transported to the site by barges. The barges were manually unloaded and the sand was mechanically transported and spread over the site to the reclamation level. A good compaction of the sand was important to prevent liquifaction of the sand during earthquakes in this earthquake prone area.

The platform development project was finished within time and within budget in spite of floods, low bearing capacity of the subsoil and a tight schedule.

DEMAs was responsible for the design and engineering of the platform (in co-operation with a sub-consultant), borrow area evaluation, construction management & supervision and to provide an Engineers Representative.

DEMAs's staff guided the local contractor in the planning and a pro-active attitude to cater for continuous operation in spite of restrictions of draft at the borrow area during low river levels and flooding at the reclamation site during high river levels.

The quality of the compaction was monitored by frequent testing by a Panda-tester.

Client

Lafarge Centre Technique
Inter-Unités

Location

Bangladesh, Chhatak

Year

1999 - 2001

Services

- design and engineering
- construction management
- engineers representative

demas
dredging consultants bv

Herbarenerf 7
2743 HA Waddinxveen
The Netherlands

Tel +31 182 546798
Fax +31 182 546802

E-mail demasnl@demas.nl
Web www.demas.nl